

Breakthrough LNG Deployment in Inland Waterway Transport

4.1 Analysis of the potential and sailing profiles of LNG using vessels in Europe

Appendix

Rotterdam; The Netherlands
April 20th, 2016

Bas Kelderman
Salih Karaarslan
EICB



Appendix

This appendix provides close-ups of the ports which are not included in the main text of the analysis of the potential and sailing profiles of LNG using vessels in Europe.

Disclaimer

The sole responsibility of this publication lies with the author. The European Union is not responsible for any use that may be made of the information contained therein.

Figure 28: Heat map showing intensity of potential LNG driven vessels in the port area of Moerdijk

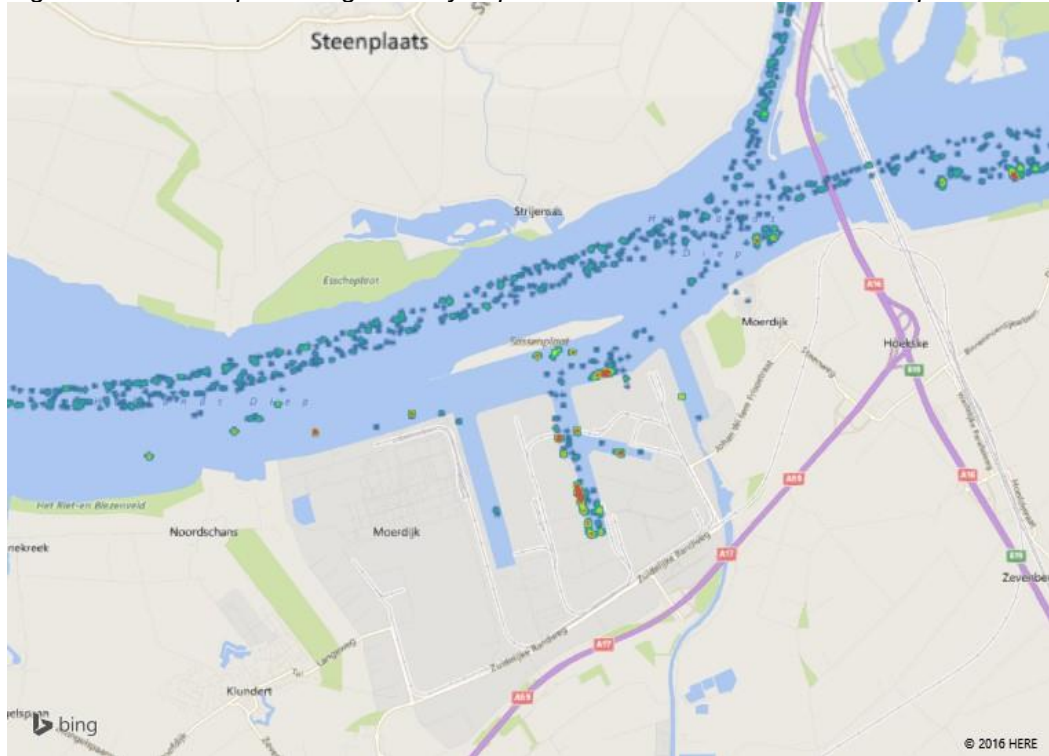


Figure 29: Heat map showing intensity of idling potential LNG driven vessels in the port area of Moerdijk

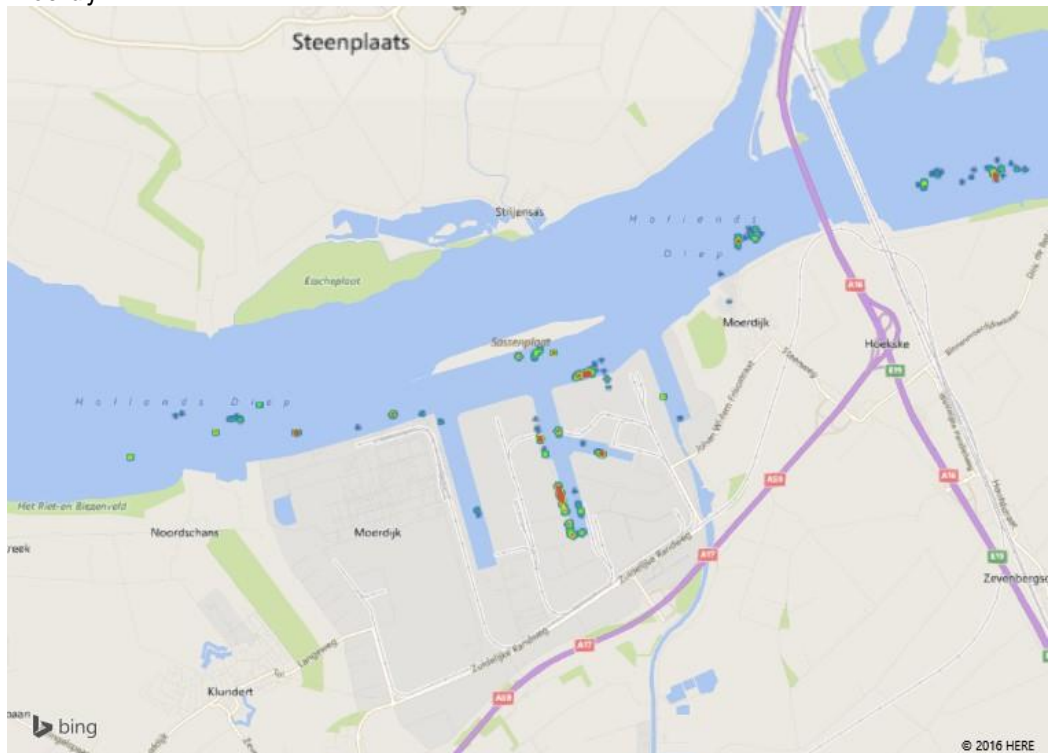


Figure 30: Heat map showing intensity of potential LNG driven vessels in the port area of Nijmegen

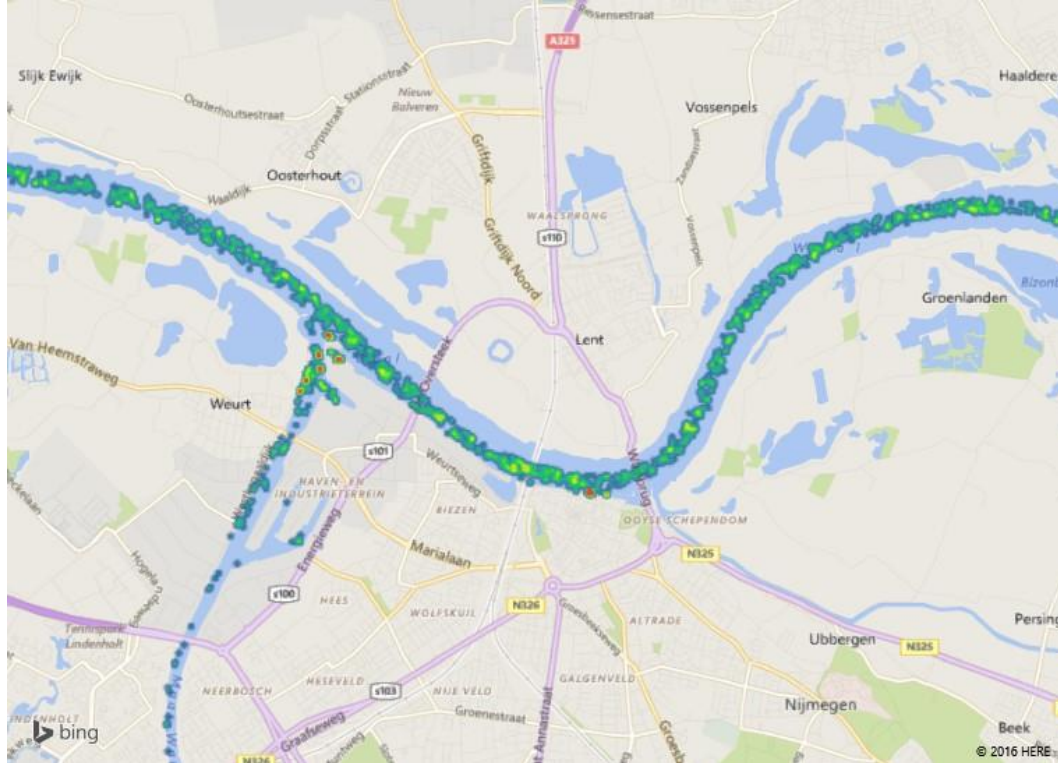


Figure 31: Heat map showing intensity of idling potential LNG driven vessels in the port area of Nijmegen

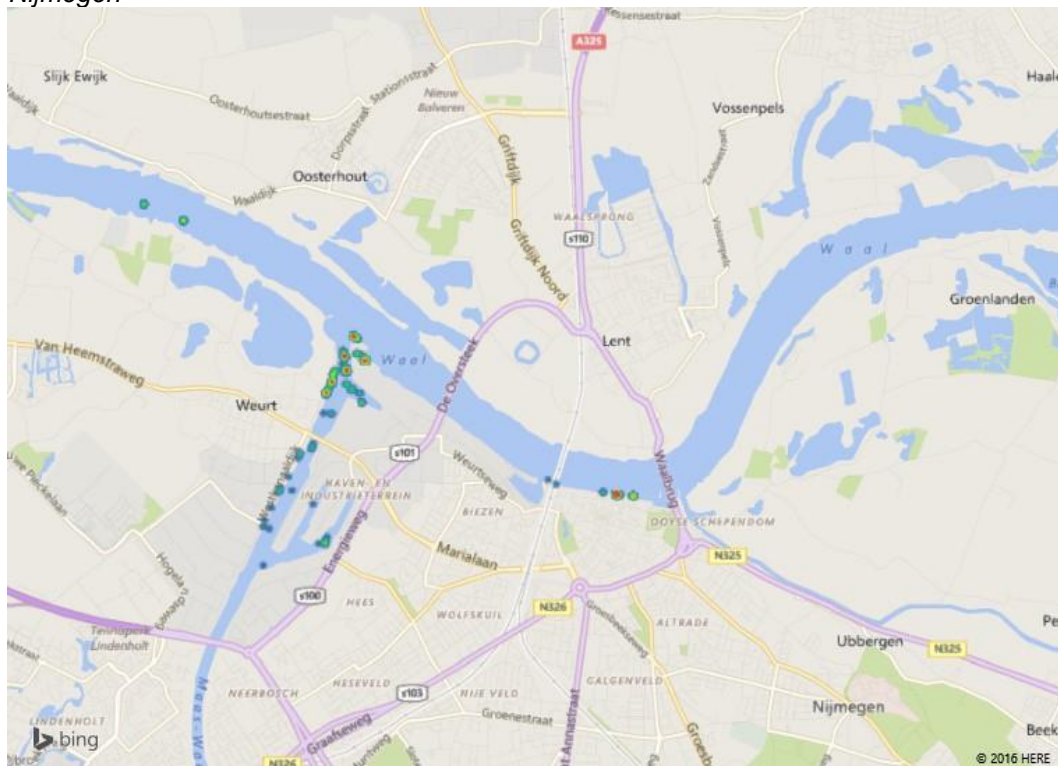


Figure 32: Heat map showing intensity of potential LNG driven vessels in the port area of Vlissingen/Terneuzen

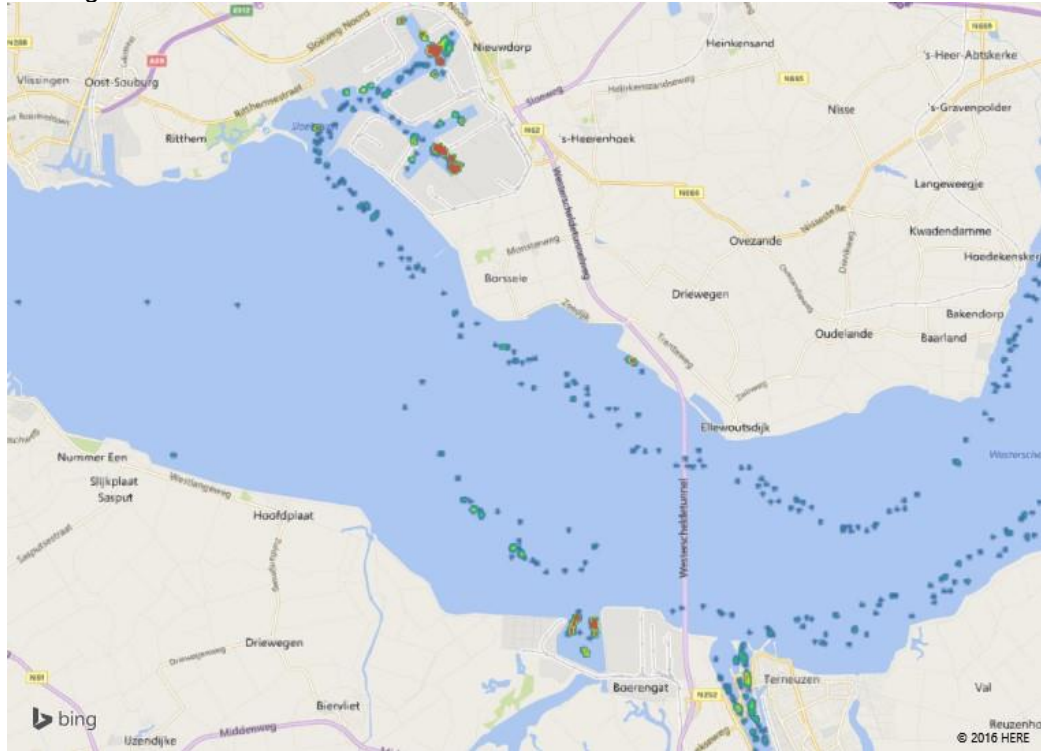


Figure 33: Heat map showing intensity of idling potential LNG driven vessels in the port area of Vlissingen/Terneuzen

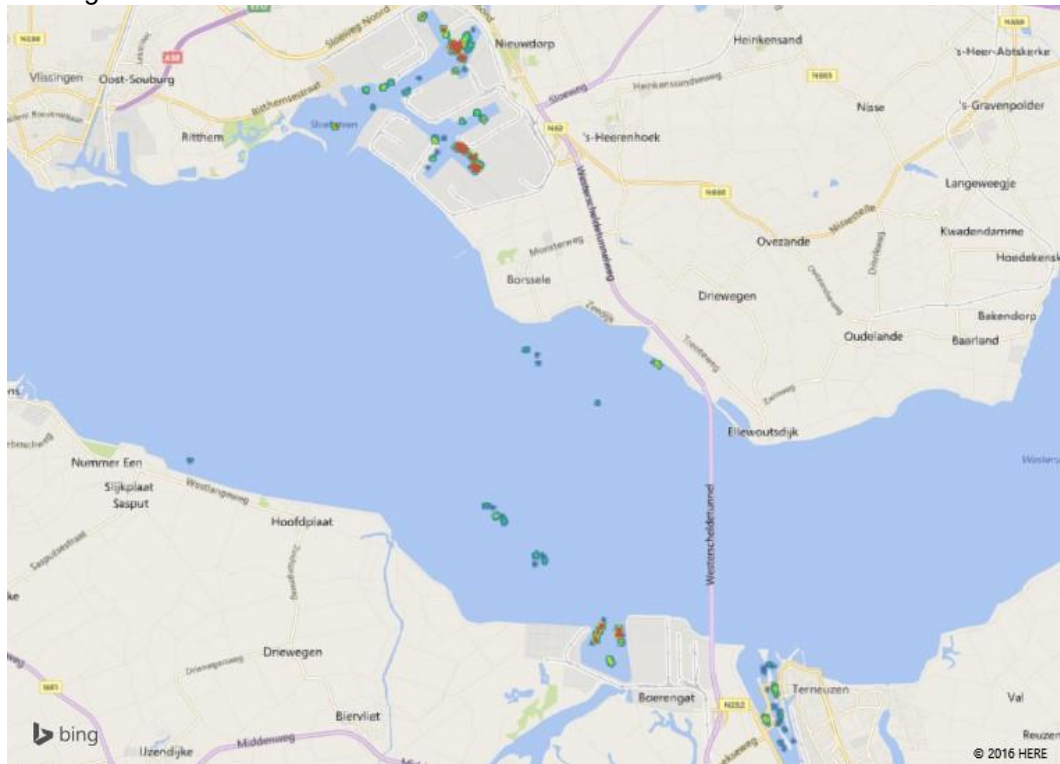


Figure 34: Heat map showing intensity of potential LNG driven vessels in the port area of Düsseldorf

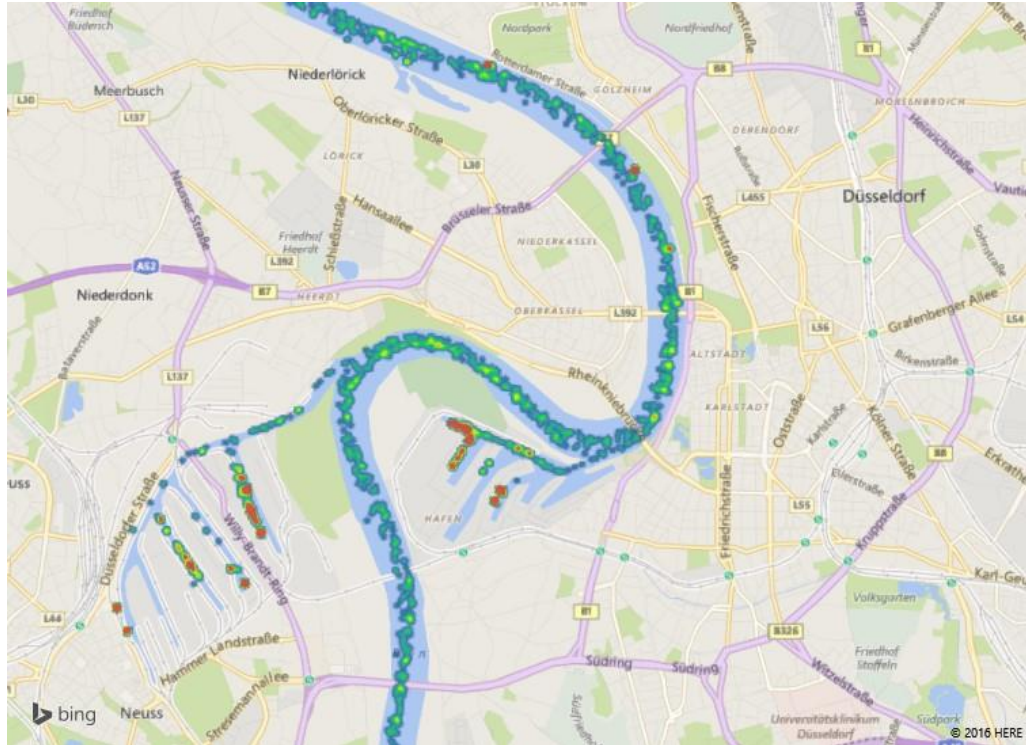


Figure 35: Heat map showing intensity of idling potential LNG driven vessels in the port area of Düsseldorf

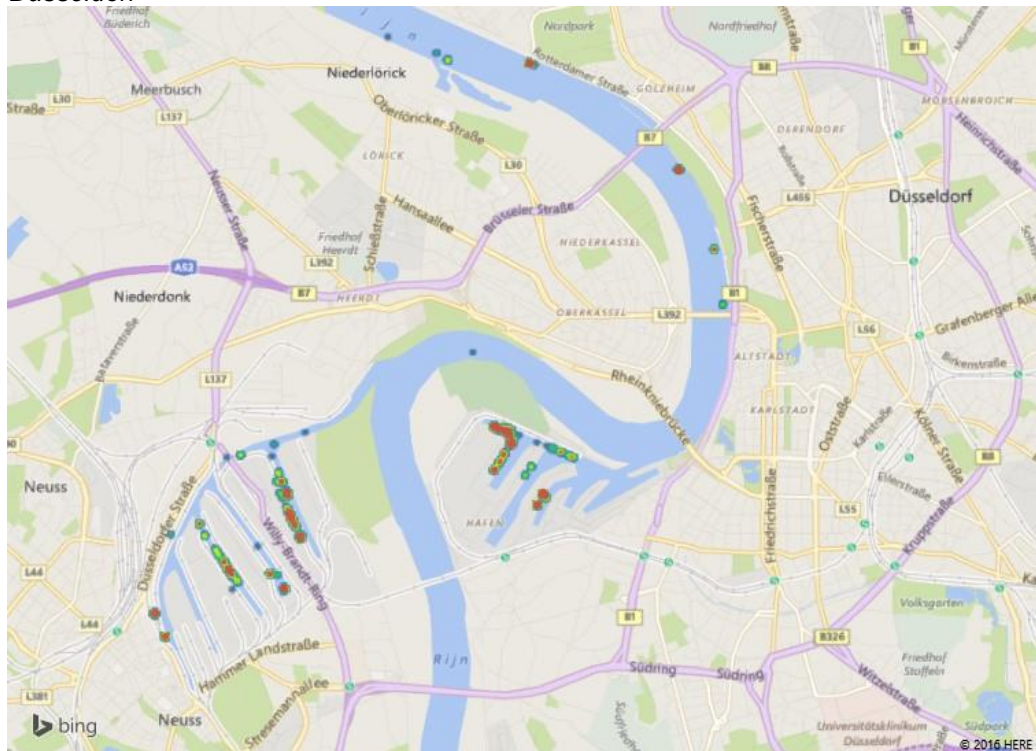


Figure 36: Heat map showing intensity of potential LNG driven vessels in the port area of Köln

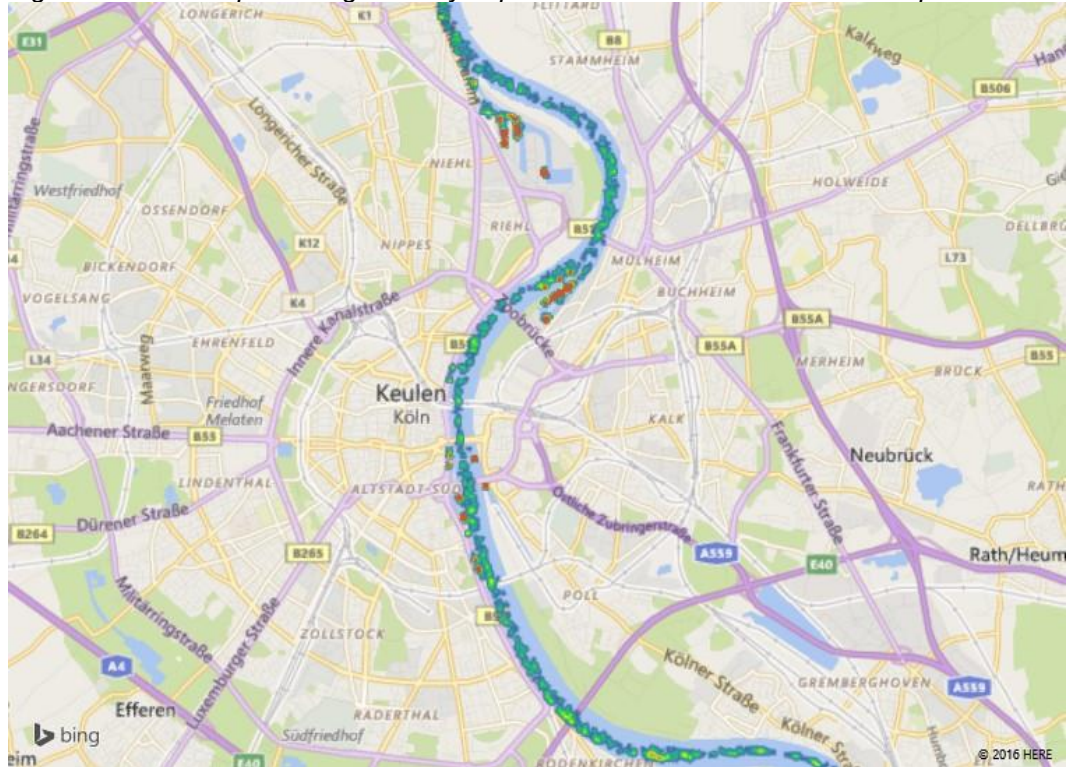


Figure 37: Heat map showing intensity of idling potential LNG driven vessels in the port area of Köln

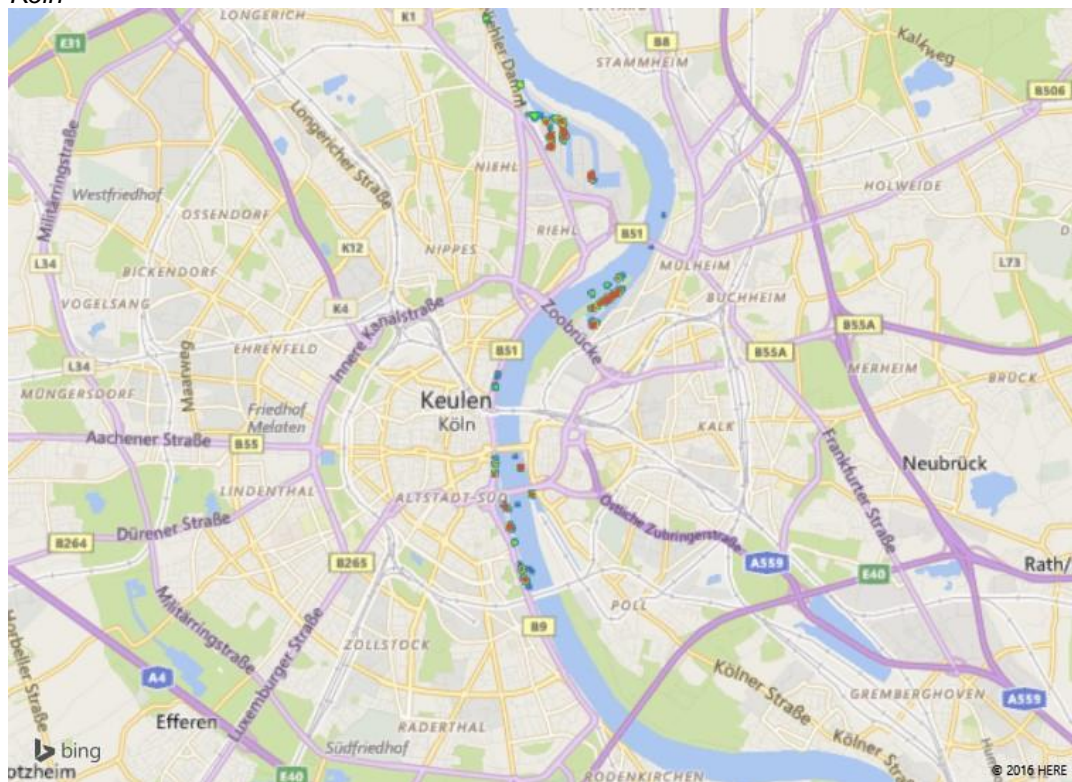


Figure 38: Heat map showing intensity of potential LNG driven vessels in the port area of Mainz

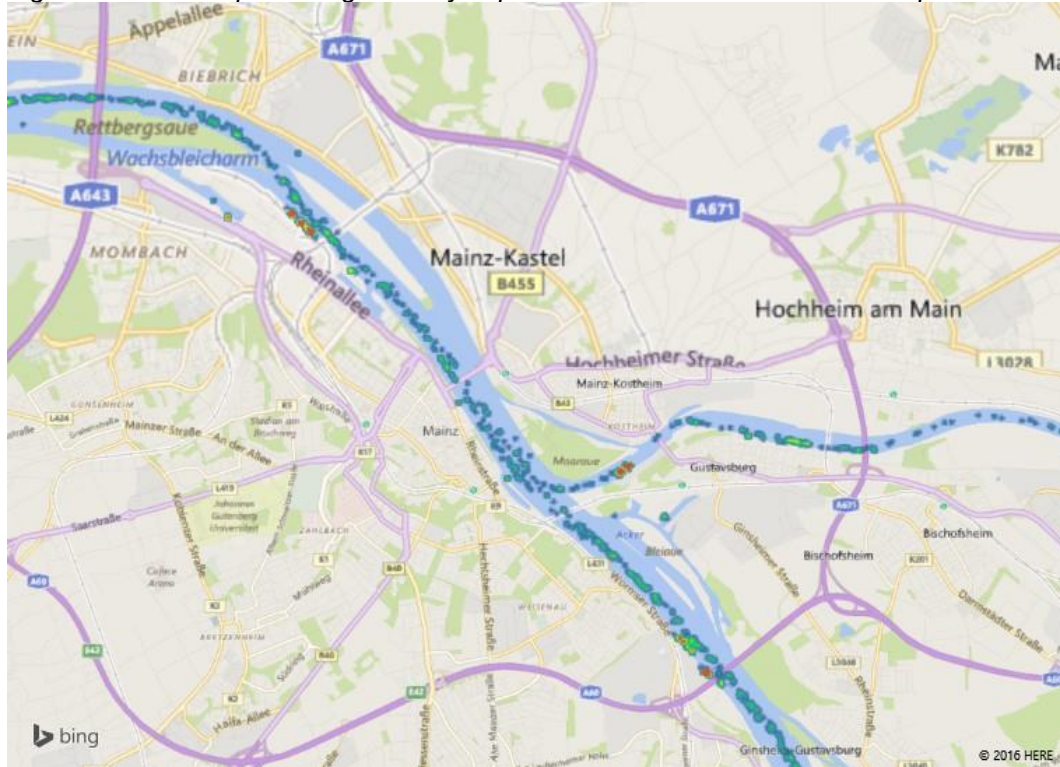


Figure 39: Heat map showing intensity of idling potential LNG driven vessels in the port area of Mainz

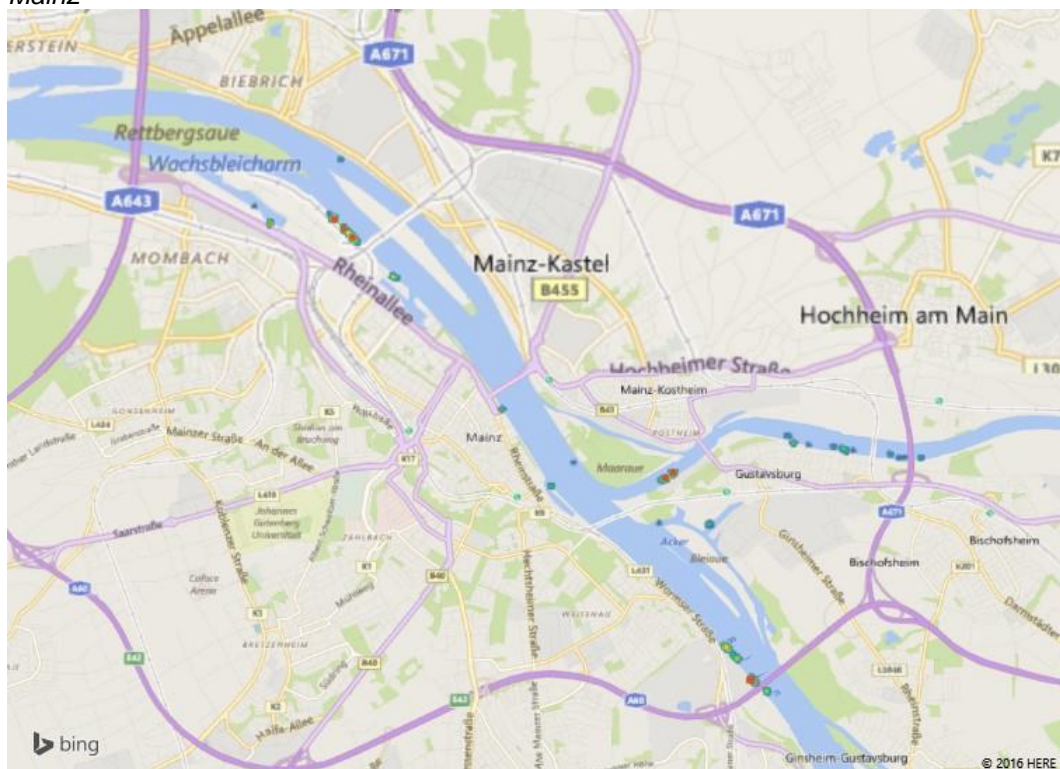


Figure 40: Heat map showing intensity of potential LNG driven vessels in the port area of Mannheim

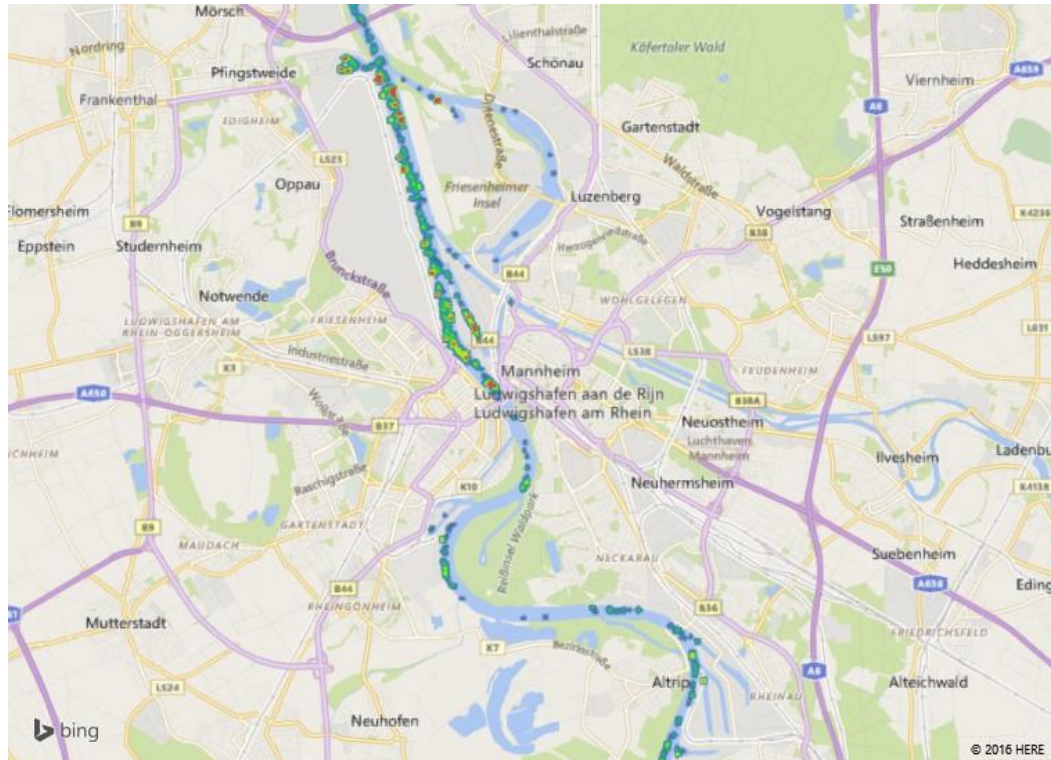


Figure 41: Heat map showing intensity of idling potential LNG driven vessels in the port area of Mannheim

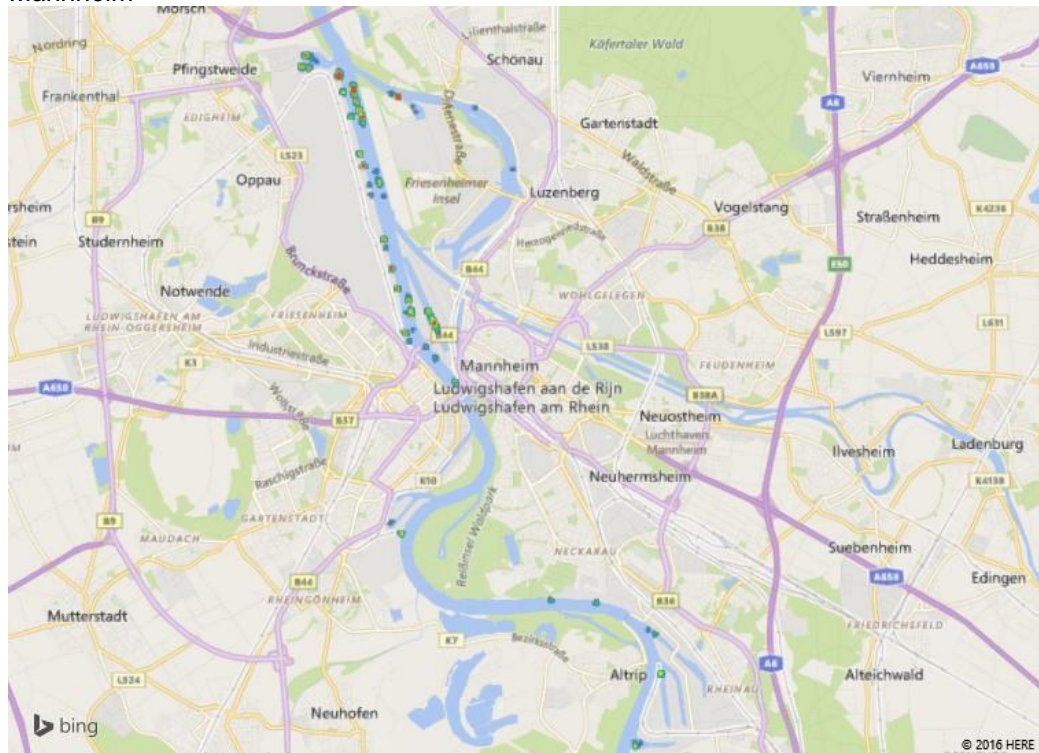


Figure 42: Heat map showing intensity of potential LNG driven vessels in the port area of Karlsruhe

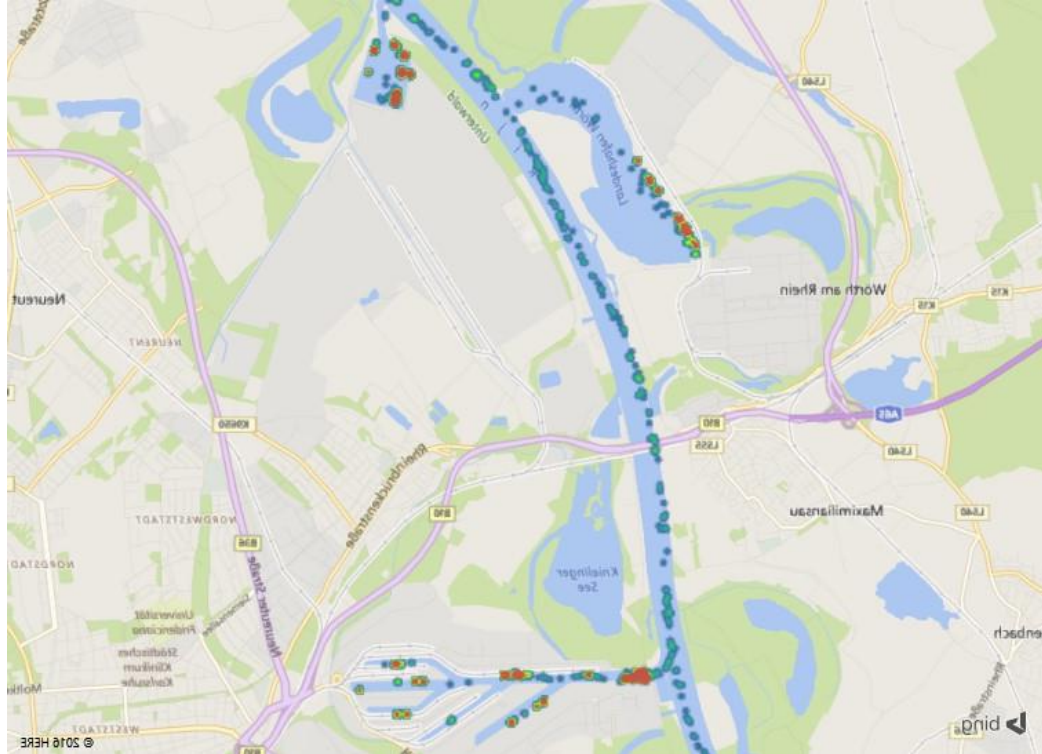


Figure 43: Heat map showing intensity of idling potential LNG driven vessels in the port area of Karlsruhe

